



March 2026 Newsletter

IXI GROW Class A EUR & Class B USD





Share Classes	Performance	Net Asset Value (NAV) per share	Net Asset Value (NAV)
Class A EUR	2.22%	€128.86	€123,922,028
Class B USD Currency Hedged	2.33%	\$95.55	\$15,700,116

Fund Overview

IXI ICAV - IXI Grow specializes in systematic foreign exchange (FX) trading.

It utilizes proprietary algorithmic models and quantitative techniques to identify and capitalize on trends in currency pairs and spot gold.

The strategy is designed to capture momentum and exploit the trends while managing drawdowns.

The investment approach is data-driven, leveraging high-end mathematical and statistical methods to generate alpha.

Emphasis is placed on rigorous backtesting, robust risk management, and adaptive algorithms to respond to an ever-changing FX market.

IXI ICAV offers monthly liquidity to qualifying investors and with no redemption fees, penalties or lockups.

Note: The Fund may be marketed to Qualifying Investors only in accordance with the Central Bank of Ireland's AIF Rulebook Non UCITS ("NU") Funds Notices and therefore a minimum subscription of €100,000 is required.

Fund Name:	IXI ICAV	
Sub-Fund Name:	IXI Grow	
IXI ICAV CBI Reference Number:	C463901	
IXI Grow CBI Reference Number:	C475682	
Share Classes:	Class A EUR	Class B – Currency Hedged - USD
Bloomberg:	IXIGEUR	IXIGUSD
ISIN Code :	IE000DE2NHB1	IE0005H6O338
Share Class Inception:	4th October 2022	1st July 2025
Domicile:	Ireland	
Investment Manager:	IXI Fund Managers Ltd	
Administrator:	Apex Fund Services (Ireland) Limited	
Depository	Sparkasse Bank Malta Public Limited Company, Ireland Branch	
Banking Institution	J.P Morgan SE- Dublin Branch	
Auditor	KPMG Ireland	
Subscriptions / Redemptions	Monthly	
Management Fee	2%	
Performance Fee	20%	
Redemption Fee	None	
Lockup	None	
Website	www.ixi.com	

Monthly Commentary

March was characterized by strong US dollar performance, as the greenback recorded its biggest monthly gain since July, driven by inflation fears stemming from the Middle East conflict and the closure of the Strait of Hormuz that pushed oil prices higher. Central banks broadly adopted a more hawkish tone, with the RBA delivering a back-to-back rate hike, while others signaling readiness to tighten policy if inflation accelerates. The Japanese yen emerged as the second-best performer, supported by intervention warnings and rising expectations of a BoJ rate hike, which discouraged further depreciation beyond key levels. The British pound ranked third, benefiting from persistent inflation in the UK and shifting expectations for Bank of England tightening, with markets pricing in around 50bps worth of additional hikes this year. In contrast, the euro underperformed despite expectations of an even more hawk-

ish ECB, as investors remained concerned about the Eurozone's vulnerability to energy shocks and the negative economic impact of the ongoing conflict, given its heavy reliance on energy imports. Gold initially weakened, pressured by rising US yields and a stronger dollar amid expectations that the Fed may need to switch to hikes. However, it recovered part of its losses toward month-end as growth concerns linked to the conflict began to outweigh inflation fears. The IXI Grow strategy delivered positive gains in March, capitalizing on strong directional market moves. The ongoing conflict in the Middle East created a challenging environment to navigate; however, the strategy remained effectively positioned in the period. Despite periods of headline-driven volatility that weighed on performance and led to some alpha erosion, the month concluded on a strong note, with an overall return of 2.22% and a share NAV of 128.86.



Monthly Net Return

Class A EUR

Year / Month	Jan	Feb	Mar	Apr	May	Jun	Jul	Aug	Sep	Oct	Nov	Dec	YTD Performance
	2017		-1.41%	1.61%	5.99%	1.11%	2.19%	0.40%	0.46%	5.22%	-1.58%	-0.27%	-0.66%
2018	4.37%	4.69%	2.49%	-1.09%	3.42%	-4.20%	2.22%	-1.71%	2.51%	-3.05%	-4.95%	12.75%	17.44%
2019	4.87%	2.20%	-2.31%	1.01%	5.74%	-1.28%	-2.15%	*7.53% -0.28%	-2.45%	-0.74%	-3.94%	-0.90%	*7.07%
2020	9.52%	8.42%	5.92%	-0.90%	-0.90%	1.83%	0.82%	1.94%	0.87%	-1.17%	0.55%	-0.19%	29.32%
2021	0.40%	1.68%	5.01%	-1.03%	0.86%	1.57%	-3.65%	3.44%	1.94%	0.86%	1.94%	-0.13%	13.38%
2022	-0.91%	1.62%	6.42%	-0.15%	0.52%	-0.99%	3.35%	-0.28%	2.30%	**1.29%	3.13%	0.04%	**17.33%
2023	0.54%	-0.26%	2.79%	0.44%	4.01%	-0.57%	-3.90%	-0.20%	-0.02%	1.01%	0.34%	2.57%	6.73%
2024	-0.44%	-2.37%	6.84%	4.00%	0.30%	-0.31%	2.20%	1.77%	2.92%	1.38%	0.69%	0.53%	18.63%
2025	0.20%	1.93%	-1.42%	1.68%	1.96%	-1.05%	0.42%	-5.17%	0.93%	-1.77%	-0.16%	-0.23%	-2.85%
2026	0.00%	-1.94%	2.22%										0.24%

Past performance does not predict future returns.

- **Managed Account** IXI Fund refers to both IXI AIF and IXI ICAV - IXI Grow.
 - * The IXI Alternative Investment Fund V.C.I.C Plc ("IXI AIF") was launched in August 2019 but actual trading had only covered part of that month. Hence, the return we report for August 2019 is that of the entire month of the managed account.
 - ** The IXI ICAV - IXI Grow was launched in October 2022. Before that and since September 2019 the returns reported were of the IXI AIF.
- **IXI Fund**

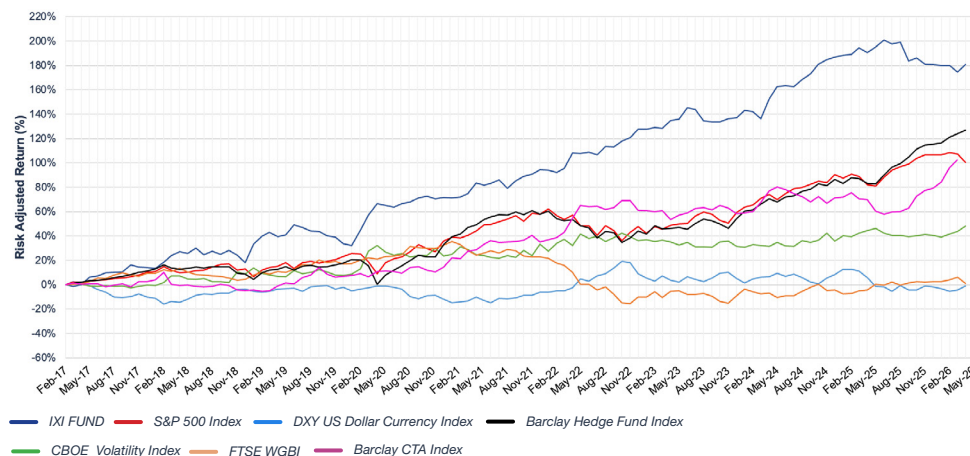
Class B – Currency Hedged - USD

Year / Month	Jan	Feb	Mar	Apr	May	Jun	Jul	Aug	Sep	Oct	Nov	Dec	YTD Performance
	2025							0.42%	-5.06%	1.19%	-1.54%	0.00%	-0.04%
2026	0.14%	-1.80%	2.33%										0.63%

Past performance does not predict future returns.

Note: Currency hedging is employed for the Currency Hedged Share Class to reduce, but not eliminate, exposure to exchange rate fluctuations relative to the Fund's Base Currency. Hedging is not guaranteed to be fully effective and may lead to discrepancies in performance compared to the unhedged Share Class. Hedging activities may involve additional risks and costs. Please refer to the Prospectus and Supplement of the Fund, in particular the section "Risk Factors – Currency Hedged Share Class Risks," before making an investment decision.

Investment Performance



Note: The returns series is adjusted to be of equal risk. Past performance does not predict future returns. Performance varies depending on how the market performs and how long an investor keeps the investment/product.

Market data and indices are products of and/or provided by Barclays Hedge, CBOE, S&P (and their respective affiliates and/or their licensors) and other publicly accessible or subscription-based sources and have been accessed and/or licensed for use by the Investment Manager. All rights are reserved and remain to the respective providers. For informational purposes only; not investment advice. The reference month figures Barclay CTA Index and Barclay Hedge Fund Index as available from the relevant sources may vary from the final figures.

Statistics

Annualised Net Return	11.79%
Cumulative Since Inception	180.86%
Annualised Monthly Risk	9.87%
Maximum Leverage	7.0
Average Leverage	-1
Sharpe Ratio	1.19
Sortino Ratio	2.49
Calmar Ratio	1.05
Max Drawdown	-11.21%
% Positive Months	60.91%
Best Month	12.75%
Worst Month	-5.17%
Correlations	
S&P 500 Index	-0.19
Barclay CTA Index	-0.09

Note: Statistics are derived from real returns of the managed account from February 2017 to July 2019, of IXI AIF commencing August 2019 to September 2022 and of IXI ICAV from October 2022 to present.



Awards & Accolades

2025		2024		2023		2022		
2021		2020						



The Investment manager is in conformity with all the standards set out by the Standards Board for Alternative Investments (“SBAI”) and became a SBAI signatory in November 2020.

Important Notice: This is a marketing communication. Please refer to the Prospectus and the Offering Supplement of the IXI ICAV (the “Fund”) before making any investment decisions. This document should not be construed as an offer or an invitation to subscribe to shares of the Fund. This document is not intended for distribution to, or use by any person or entity in any jurisdiction where such distribution or use would be contrary to local law or regulation. In particular, this document is directed only at persons who are deemed qualifying investors (in accordance with the Central Bank of Ireland’s AIF Rulebook/NU Notices) intending to invest and subscribe to a minimum subscription of 100,000.00 Euro. The shares of IXI ICAV - IXI Grow may not, be directly or indirectly offered or sold in the United States or to any U.S. Person. Investment advisory services are offered in the United States exclusively to Qualified Eligible Persons (“QEPs”) as defined under the Commodity Exchange Act and CFTC Regulations. This document is private and confidential and may not be distributed, in whole or part, without IXI Fund Managers Ltd express written permission. This document is not intended to constitute, and should not be construed as, investment, financial, tax or any other kind of advice. Potential eligible qualifying investors of the Fund should seek their own independent financial advice and any decision to invest should be made only after reviewing the Prospectus and Offering Supplement of the Fund. Investment in the Fund involves special risks, and subscription to investment shares should be considered only by persons who can bear the economic risk of their investment for an indefinite period and who can afford a total loss of their investment. The value of investment shares may either increase or decrease and investors may not recover the amount invested. Leveraged investments may result in reduced or negative returns. The use of leverage may create an opportunity for increased returns but may also result in exposure to additional levels of risk including (i) greater losses from investments than would otherwise have been the case had no such leveraging occurred and (ii) reduced returns where the investment fails to earn a return that equals or exceeds the cost of leverage related to such investments. Consequently, there is a potential risk of the loss of the entire amount of the value of an investor’s investment in the Fund. Past performance is not a guide to future results, nor does it predict future returns. Although the information in this document is believed to be materially correct, no representation or warranty (express or implied) is given as to the accuracy, adequacy, completeness, availability or timeliness of any of the information provided. IXI Fund Managers Ltd accepts no liability or responsibility for any errors or omissions for any direct, indirect, special, consequential or other loss and/or damage (including lost income or lost profit and opportunity costs) occurring from the use of any information contained within this document.

IXI Fund Managers Ltd is an Alternative Investment Fund Manager (AIFM), licensed and regulated by the Cyprus Securities and Exchange Commission, with License Number AIFM27/56/2013 and is registered with the U.S. Commodity Futures Trading Commission (“CFTC”) as a Commodity Trading Advisor (“CTA”) and is a Member of the National Futures Association (“NFA”) (NFA ID: 0556454). IXI ICAV – IXI Grow is authorized by the Central Bank of Ireland (Reference No C475682) as an Irish Collective Asset-management Vehicle under the Irish Collective Asset-management Vehicles Act 2015.